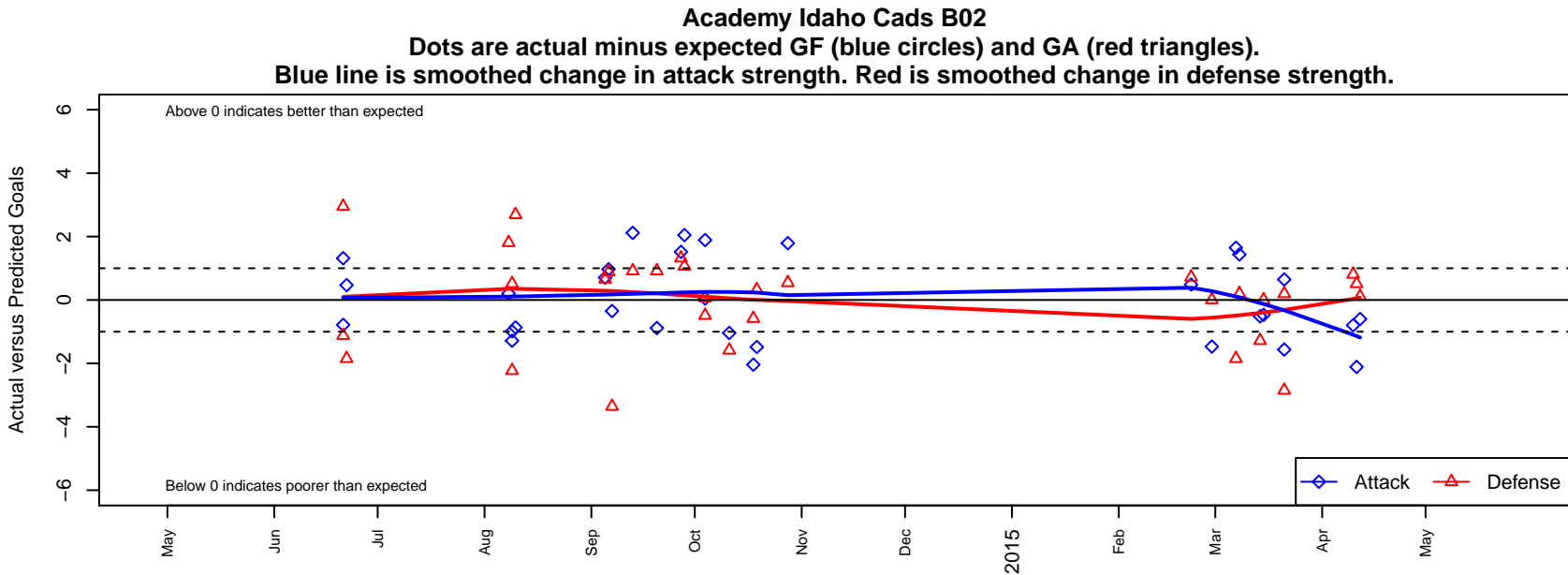


Academy Idaho Cads B02

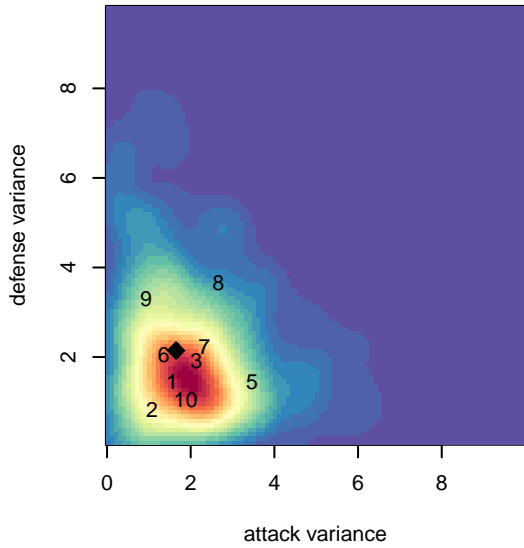
The Academy Idaho
 Post Falls, ID
 B02 total strength=584
 attack=0.74 defense=0.3
 fall league = PSPL–Inland Div 1 U12
 spr league = Spr PSPL SuperLeague 2 U12

alt names used:
 THE ACADEMY IDAHO 02/03B (ID)
 U11b [Idaho Academy]
 The Academy Cads U12B
 The Academy Idaho [B02]
 The Academy Cads U12B
 THE ACADEMY IDAHO 02B (ID)

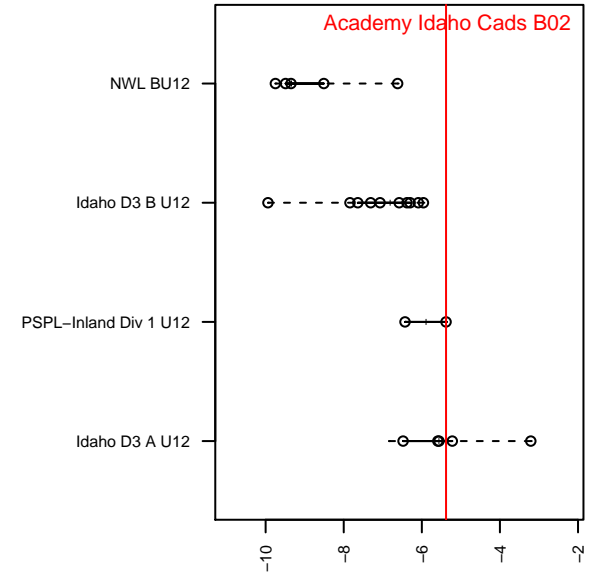
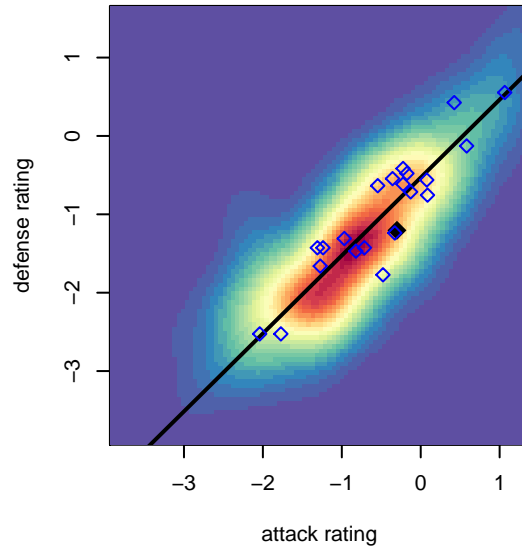
Venues played:
 2014 US Club Regionals Premier U11
 2014 Les Schwab NW Cup U12 Gold U12
 2014 Pend Oreille Cup BU12 11v11
 2014 PSPL–Inland Div 1 U12
 2014 Spr PSPL SuperLeague 2 U12
 2014 WA Cup BU12 Gold/Platinum U12



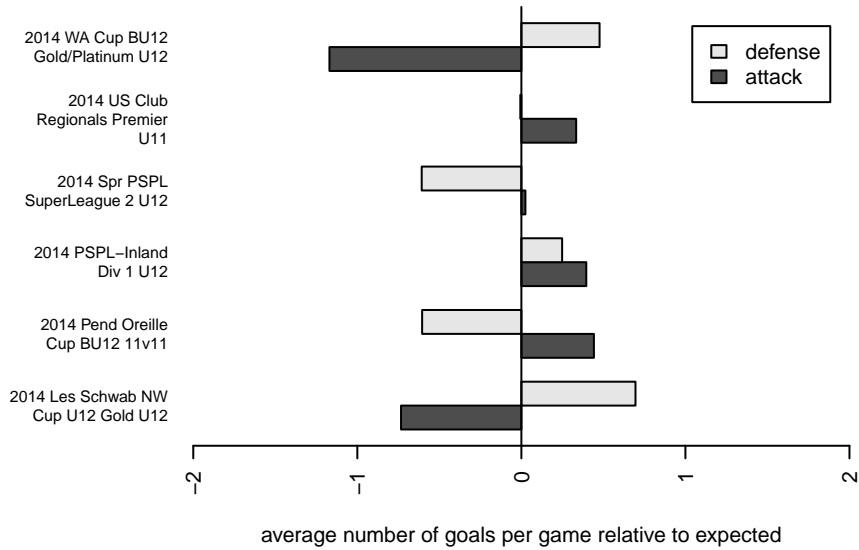
**attack and defense variance (black dot)
relative to other teams
and top 10 in region**



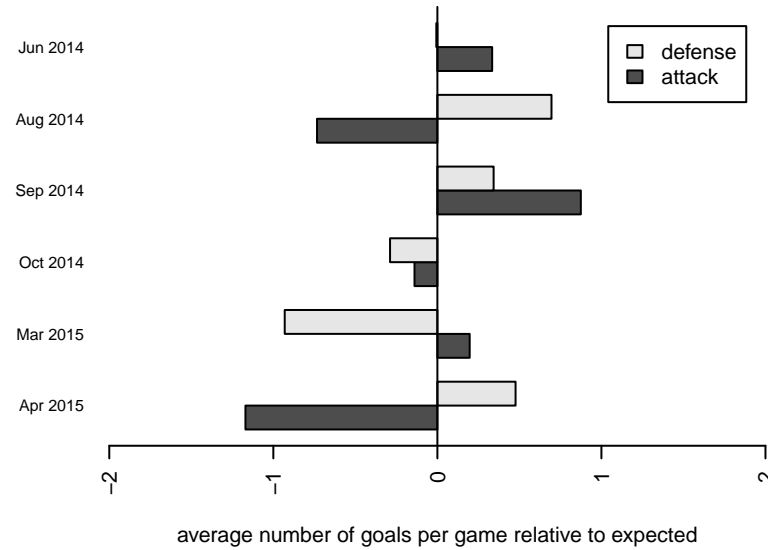
**attack and defense rating
relative to others at age
and all opponents in last 13 months**



Performance relative to 13 month average



Performance relative to 13 month average



| date | home | | away | | venue | pred.home | pred.away |
|------------|----------------------------|---|---------------------------|----|-------------------------------------|-----------|-----------|
| 2015-04-12 | Wenatchee Fire Black B02 | 5 | Academy Idaho Cads B02 | 0 | 2014 WA Cup BU12 Gold/Platinum U12 | 5.11 | 0.60 |
| 2015-04-11 | Academy Idaho Cads B02 | 1 | Cobra Manchester City B02 | 2 | 2014 WA Cup BU12 Gold/Platinum U12 | 3.11 | 2.51 |
| 2015-04-10 | Academy Idaho Cads B02 | 1 | Washington East SC B02 | 3 | 2014 WA Cup BU12 Gold/Platinum U12 | 1.80 | 3.81 |
| 2015-03-21 | Academy Idaho Cads B02 | 2 | Cascade FC Green B02 | 5 | 2014 Spr PSPL SuperLeague 2 U12 | 1.35 | 2.15 |
| 2015-03-21 | Academy Idaho Cads B02 | 0 | NW United Premier B02 | 3 | 2014 Spr PSPL SuperLeague 2 U12 | 1.56 | 3.20 |
| 2015-03-15 | RSA Elite B02 | 2 | Academy Idaho Cads B02 | 1 | 2014 Spr PSPL SuperLeague 2 U12 | 2.00 | 1.47 |
| 2015-03-14 | FC Tacoma Blue B02 | 3 | Academy Idaho Cads B02 | 1 | 2014 Spr PSPL SuperLeague 2 U12 | 1.72 | 1.52 |
| 2015-03-08 | NW United Premier B02 | 3 | Academy Idaho Cads B02 | 3 | 2014 Spr PSPL SuperLeague 2 U12 | 3.20 | 1.56 |
| 2015-03-07 | Cascade FC Green B02 | 4 | Academy Idaho Cads B02 | 3 | 2014 Spr PSPL SuperLeague 2 U12 | 2.15 | 1.35 |
| 2015-02-28 | Academy Idaho Cads B02 | 0 | RSA Elite B02 | 2 | 2014 Spr PSPL SuperLeague 2 U12 | 1.47 | 2.00 |
| 2015-02-22 | Academy Idaho Cads B02 | 2 | FC Tacoma Blue B02 | 1 | 2014 Spr PSPL SuperLeague 2 U12 | 1.52 | 1.72 |
| 2014-10-28 | Sting SC Leeds United B02 | 1 | Academy Idaho Cads B02 | 5 | 2014 PSPL-Inland Div 1 U12 | 1.54 | 3.21 |
| 2014-10-19 | Academy Idaho Cads B02 | 2 | FC Spokane Black B02 | 1 | 2014 PSPL-Inland Div 1 U12 | 3.48 | 1.32 |
| 2014-10-18 | Academy Idaho Cads B02 | 6 | XiFA 2022 B03 | 1 | 2014 PSPL-Inland Div 1 U12 | 8.04 | 0.41 |
| 2014-10-11 | XiFA 2022 B03 | 2 | Academy Idaho Cads B02 | 7 | 2014 PSPL-Inland Div 1 U12 | 0.41 | 8.04 |
| 2014-10-04 | Breakers White B02 | 1 | Academy Idaho Cads B02 | 3 | 2014 PSPL-Inland Div 1 U12 | 1.06 | 2.95 |
| 2014-10-04 | Academy Idaho Cads B02 | 5 | Cobra Manchester City B02 | 3 | 2014 PSPL-Inland Div 1 U12 | 3.11 | 2.51 |
| 2014-09-28 | Academy Idaho Cads B02 | 5 | Breakers White B02 | 0 | 2014 PSPL-Inland Div 1 U12 | 2.95 | 1.06 |
| 2014-09-27 | FC Spokane Black B02 | 0 | Academy Idaho Cads B02 | 5 | 2014 PSPL-Inland Div 1 U12 | 1.32 | 3.48 |
| 2014-09-20 | Academy Idaho Cads B02 | 3 | Spokane Spiders B02 | 0 | 2014 PSPL-Inland Div 1 U12 | 3.88 | 0.91 |
| 2014-09-13 | Spokane Spiders B02 | 0 | Academy Idaho Cads B02 | 6 | 2014 PSPL-Inland Div 1 U12 | 0.91 | 3.88 |
| 2014-09-07 | Spokane Pumas B02 | 6 | Academy Idaho Cads B02 | 1 | 2014 Pend Oreille Cup BU12 11v11 | 2.64 | 1.35 |
| 2014-09-06 | Kootenay South Storm 2003B | 0 | Academy Idaho Cads B02 | 4 | 2014 Pend Oreille Cup BU12 11v11 | 0.89 | 3.03 |
| 2014-09-05 | Sandpoint Strikers B02 | 0 | Academy Idaho Cads B02 | 11 | 2014 Pend Oreille Cup BU12 11v11 | 0.65 | 10.29 |
| 2014-08-10 | SSC Shadow A B02 | 3 | Academy Idaho Cads B02 | 0 | 2014 Les Schwab NW Cup U12 Gold U12 | 5.69 | 0.87 |
| 2014-08-09 | Academy Idaho Cads B02 | 2 | Sting SC Sunderland B02 | 1 | 2014 Les Schwab NW Cup U12 Gold U12 | 3.28 | 1.51 |
| 2014-08-09 | Academy Idaho Cads B02 | 0 | Spokane Pumas Black B03 | 5 | 2014 Les Schwab NW Cup U12 Gold U12 | 0.99 | 2.77 |
| 2014-08-08 | Academy Idaho Cads B02 | 2 | Washington East SC B02 | 2 | 2014 Les Schwab NW Cup U12 Gold U12 | 1.80 | 3.81 |

| date | home | | away | | venue | pred.home | pred.away |
|-------------|------------------------|---|-------------------------|----|------------------------------------|------------------|------------------|
| 2014-06-22 | Academy Idaho Cads B02 | 1 | Crossfire Premier A B03 | 11 | 2014 US Club Regionals Premier U11 | 0.53 | 9.15 |
| 2014-06-21 | ISC Gunners A B03 | 0 | Academy Idaho Cads B02 | 3 | 2014 US Club Regionals Premier U11 | 2.95 | 1.68 |
| 2014-06-21 | Academy Idaho Cads B02 | 3 | Central WA SA Navy B03 | 3 | 2014 US Club Regionals Premier U11 | 3.78 | 1.88 |